

Scaled data based on original data using
LM-66-11 Electrical and Photometric Measurements of Single-Ended Compact
Fluorescent Lamps

Test Report Prepared for
Cooper Lighting Solutions
(formerly Eaton)

Brand: LUMIERE

Report Number: ITL52168

Luminaire Tested: **1900-IL-30-CF26**

Issue Date: 3/3/2020

Test Information

Test Method: LM-66-11
Report Number: ITL52168
Test Lab:
Issue Date: 3/3/2020
Manufacturer: COOPER LIGHTING SOLUTIONS (FORMERLY EATON)
Product Line: LUMIERE
Catalog Number: 1900-IL-30-CF26
Description: CYLINDRICAL METAL HOUSING. FABRICATED METAL INTERNAL REFLECTOR ASSEMBLY WITH THREE GOLD FINISHED METAL POSTS CONNECTING MULTIPLE TIERED LOUVERS, ALL LOUVERS HAVE BLACK PAINTED UPPER SURFACE AND WHITE PAINTED LOWER SURFACE. CLEAR CYLINDRICAL PLASTIC LENS.
Light Source: ONE 26-WATT TRIPLE TWIN TUBE COMPACT FLUORESCENT, SYLVANIA DULUX T/E CF26DT/E/IN/835, VERTICAL BASE-DOWN POSITION.
Ballast/Driver: ENERGY SAVINGS ES-1-CFH-42/32/26-UNV-D

Summary

Lumens per Lamp: 1800 (1 lamp)
Luminaire Lumens: 236.2 lumens
Efficiency: 13.1%
Efficacy: 7.8 lumens/watt
Luminous Opening: (L: 0' x W: -0.29' x H: 0.35'
IES Classification: Type V - Medium - Cutoff
BUG Rating: B0 - U1 - G1

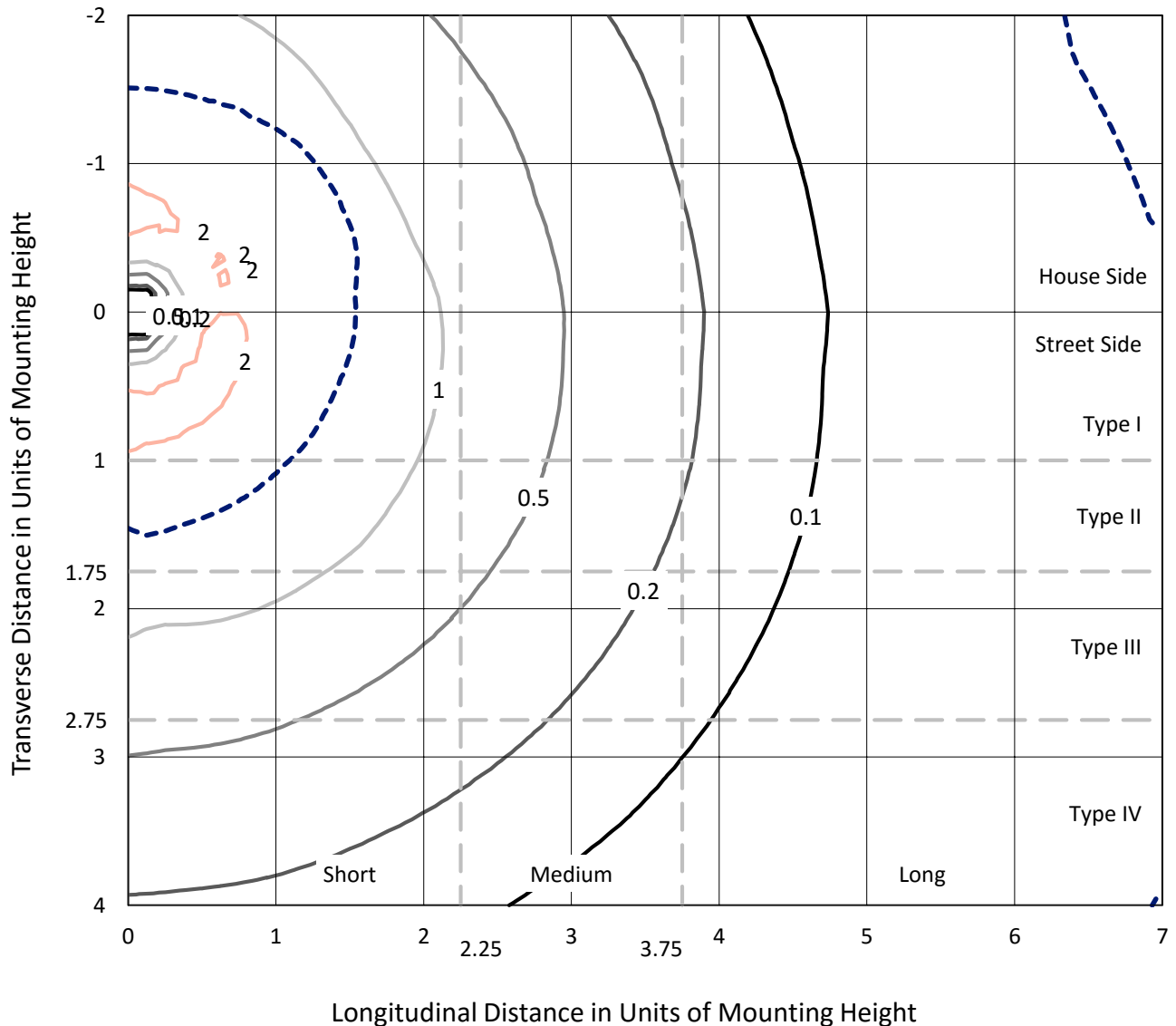
Input Watts (W): 30.3
Input Voltage (V): NR
Input Current (A_{in}): NR
Voltage Rise (V): NR
Power Factor: NR
Total Harmonic Distortion (THDi): NR
Frequency (hertz): 60
Stabilization Time: NR
Operation Time: NR
Ambient Temperature (°C): NR
Test Distance: 25 FT



REPORT NUMBER: ITL52168
 CATALOG NUMBER: 1900-IL-30-CF26

Iso-Footcandle Lines of Horizontal Illumination

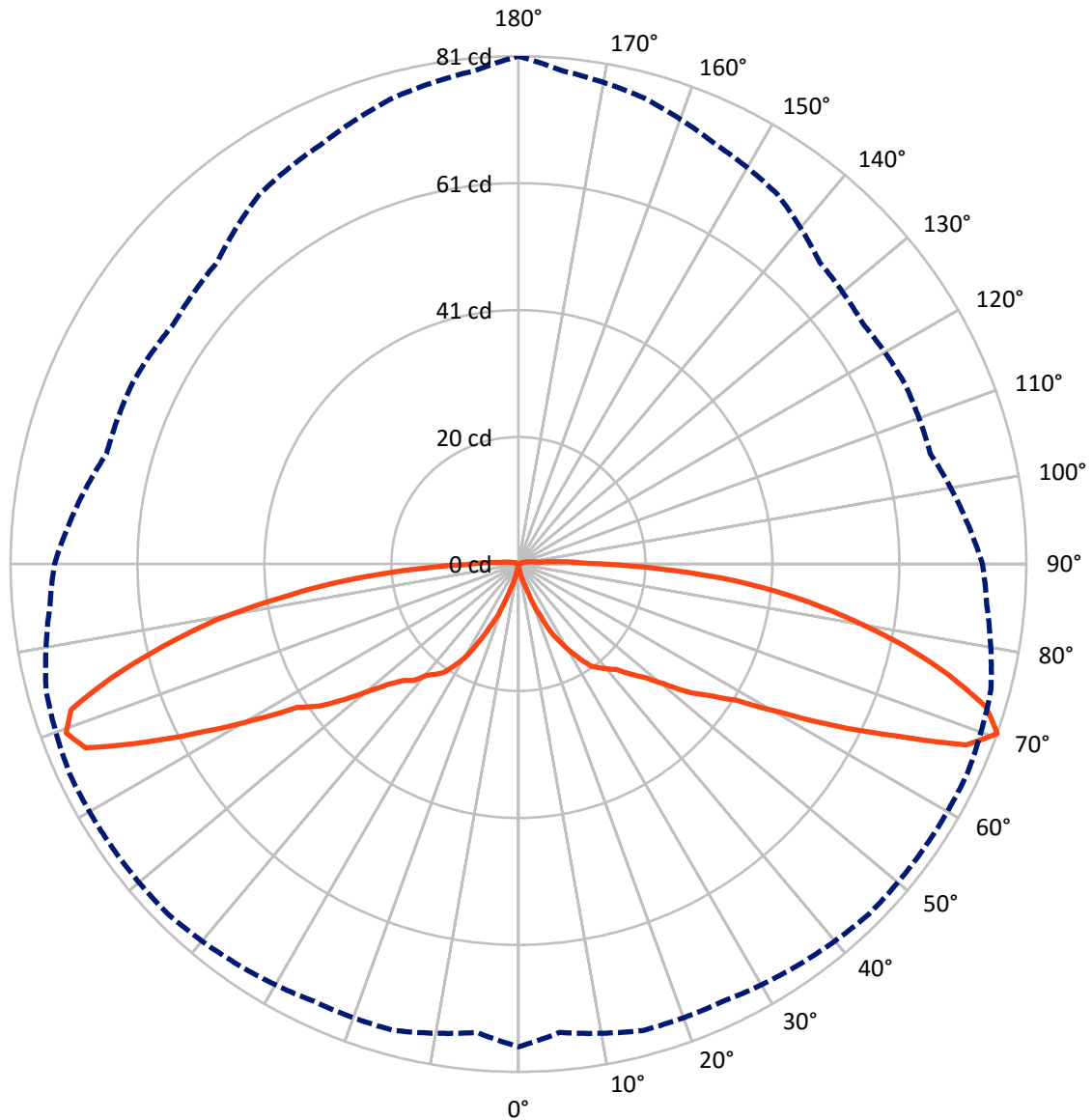
× Max cd
 - - - 1/2 Max cd



Based on 2.2 foot mounting height. Maximum calculated value = 2.3 fc
 Type V - Medium - Cutoff

REPORT NUMBER: ITL52168
CATALOG NUMBER: 1900-IL-30-CF26

Luminous Intensity Polar Plot



— Vertical Plane Through 180-Deg Lateral - - - Horizontal Cone Through 70-Deg Vertical

REPORT NUMBER: ITL52168

CATALOG NUMBER: 1900-IL-30-CF26

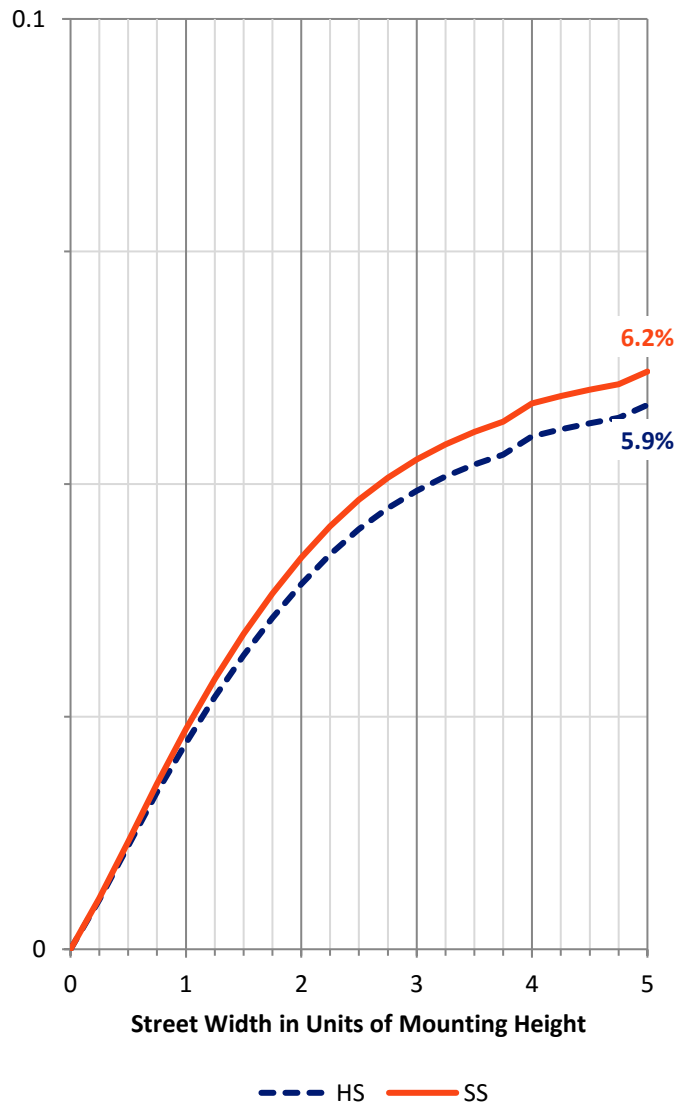
FLUX DISTRIBUTION:

		Downward	Upward	Total
House Side	Lumens	112.0	2.5	114.6
	% Lamp	6.2	0.1	6.4
Street Side	Lumens	119.1	2.5	121.7
	% Lamp	6.6	0.1	6.8
Total	Lumens	231.1	5.1	236.2
	% Lamp	12.8	0.3	13.1

Coefficient of Utilization

ZONAL LUMENS:

Zone	Lumens	% Fixture	% Lamp
0°-10°	0.0	0.0	0.0
10°-20°	0.8	0.3	0.0
20°-30°	5.0	2.1	0.3
30°-40°	11.7	5.0	0.7
40°-50°	19.3	8.2	1.1
50°-60°	33.4	14.1	1.9
60°-70°	62.3	26.4	3.5
70°-80°	67.6	28.6	3.8
80°-90°	31.1	13.2	1.7
90°-100°	3.9	1.6	0.2
100°-110°	1.1	0.5	0.1
110°-120°	0.2	0.1	0.0
120°-130°	0.0	0.0	0.0
130°-140°	0.0	0.0	0.0
140°-150°	0.0	0.0	0.0
150°-160°	0.0	0.0	0.0
160°-170°	0.0	0.0	0.0
170°-180°	0.0	0.0	0.0
0°-90°	231.1	97.8	12.8
0°-180°	236.2	100.0	13.1



REPORT NUMBER: ITL52168

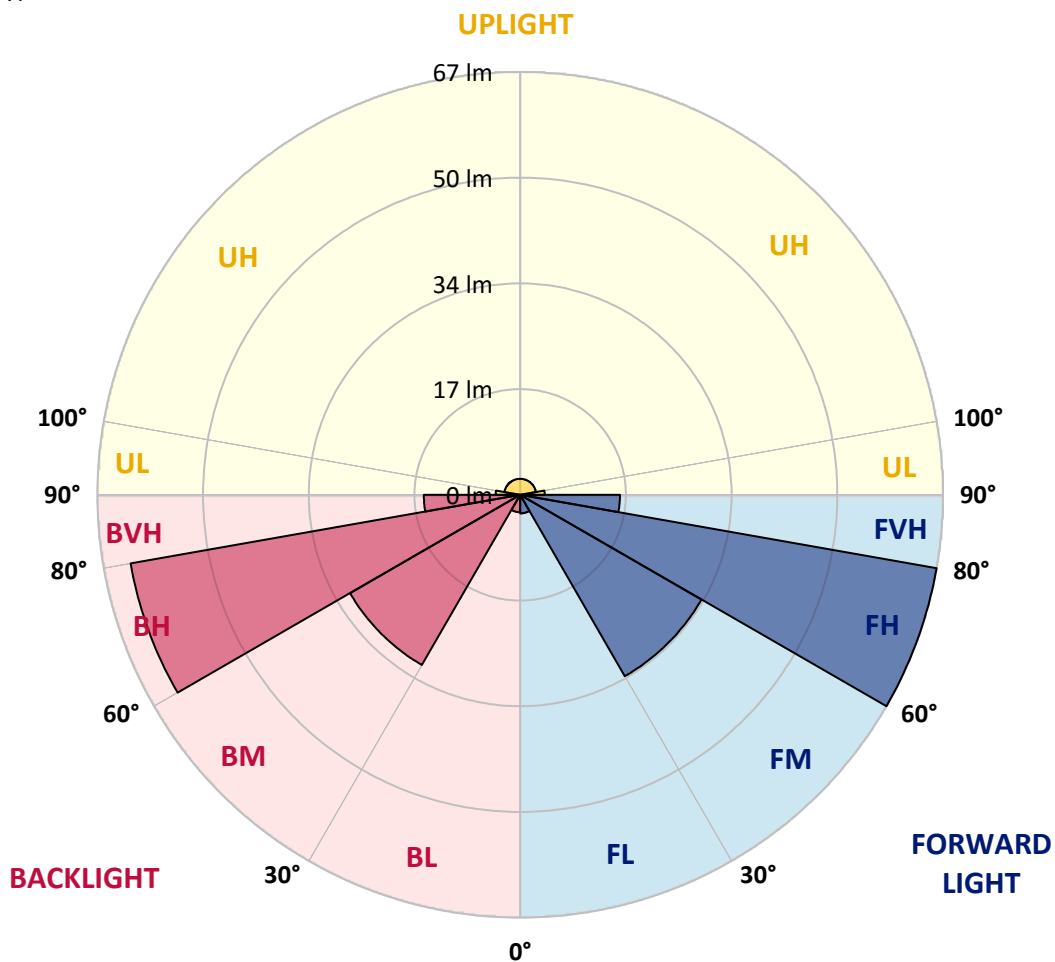
CATALOG NUMBER: 1900-IL-30-CF26

LUMINAIRE CLASSIFICATION SYSTEM LUMEN TABLE AND BUG RATING:

Zone	Lumens	% Lamp	Zone Rating/Lumen Limit		
			B	U	G
FL (0°-30°)	3.0	0.2			
FM (30°-60°)	33.2	1.8			
FH (60°-80°)	67.1	3.7			G0/660
FVH (80°-90°)	15.8	0.9			G1/100
BL (0°-30°)	2.8	0.2	B0/110		
BM (30°-60°)	31.2	1.7	B0/220		
BH (60°-80°)	62.8	3.5	B0/110		G0/660
BVH (80°-90°)	15.3	0.8			G1/100
UL (90°-100°)	3.9	0.2		U1/10	
UH (100°-180°)	2.5	0.1		U1/10	
Trapped Light	1563.8	86.9			

BUG Rating: B0-U1-G1

Type V Medium





REPORT NUMBER: ITL52168

CATALOG NUMBER: 1900-IL-30-CF26

CANDELA DISTRIBUTION (FULL):

	0°	5°	15°	25°	35°	45°	55°	65°	75°	85°	90°
0°	0	0	0	0	0	0	0	0	0	0	0
2.5°	0	0	0	0	0	0	0	0	0	0	0
5°	0	0	0	0	0	0	0	0	0	0	0
7.5°	0	0	0	0	0	0	0	0	0	0	0
10°	0	0	0	0	0	0	0	0	0	0	0
12.5°	1	1	1	1	1	1	1	1	1	1	1
15°	3	2	2	2	2	2	2	2	2	2	2
17.5°	4	3	3	4	4	4	4	4	4	4	4
20°	6	5	6	6	6	6	6	6	6	6	6
22.5°	9	8	8	8	8	8	8	8	8	8	8
25°	11	10	10	10	11	11	11	11	11	10	10
27.5°	14	13	13	13	14	14	14	14	14	13	13
30°	17	16	16	16	16	16	16	16	16	15	15
32.5°	19	18	18	18	18	18	18	18	18	17	16
35°	21	20	20	20	20	20	20	20	19	18	18
37.5°	22	21	21	21	21	21	21	21	20	20	19
40°	23	22	22	22	22	22	22	22	21	21	20
42.5°	25	24	24	24	24	24	23	23	23	22	22
45°	26	25	26	26	26	25	25	25	25	24	24
47.5°	28	28	28	28	28	28	28	27	27	27	26
50°	31	30	31	31	31	31	30	30	30	30	30
52.5°	35	34	34	35	35	35	34	34	34	33	33
55°	39	37	38	38	38	38	37	37	37	36	36
57.5°	42	41	42	42	42	42	42	42	41	40	40
60°	49	47	48	48	49	49	48	48	47	47	47
62.5°	57	54	56	55	57	57	57	56	56	55	55
65°	66	63	65	66	66	67	66	66	65	64	63
67.5°	75	72	74	75	76	77	77	76	75	73	72
70°	77	75	77	77	78	79	79	79	78	75	74
72.5°	75	73	74	74	75	76	76	77	75	72	72
75°	67	66	67	66	67	68	69	69	68	65	65
77.5°	58	58	58	58	58	60	60	60	59	56	57
80°	49	48	49	48	49	50	51	51	50	48	48
82.5°	38	38	39	38	39	41	41	41	40	38	39
85°	28	29	29	30	29	30	31	31	30	28	29
87.5°	17	18	18	18	18	18	19	19	19	17	17
90°	8	8	8	8	9	9	9	9	9	9	9
95°	3	2	2	2	2	2	2	2	2	2	2
105°	1	1	1	1	1	1	1	1	1	1	1
115°	0	0	0	0	0	0	0	0	0	0	0
125°	0	0	0	0	0	0	0	0	0	0	0
135°	0	0	0	0	0	0	0	0	0	0	0
145°	0	0	0	0	0	0	0	0	0	0	0
155°	0	0	0	0	0	0	0	0	0	0	0
165°	0	0	0	0	0	0	0	0	0	0	0



REPORT NUMBER: ITL52168

CATALOG NUMBER: 1900-IL-30-CF26

CANDELA DISTRIBUTION (continued):

	0°	5°	15°	25°	35°	45°	55°	65°	75°	85°	90°
175°	0	0	0	0	0	0	0	0	0	0	0
180°	0	0	0	0	0	0	0	0	0	0	0



REPORT NUMBER: ITL52168

CATALOG NUMBER: 1900-IL-30-CF26

CANDELA DISTRIBUTION (continued):

	95°	105°	115°	125°	135°	145°	155°	165°	175°	180°
0°	0	0	0	0	0	0	0	0	0	0
2.5°	0	0	0	0	0	0	0	0	0	0
5°	0	0	0	0	0	0	0	0	0	0
7.5°	0	0	0	0	0	0	0	0	0	0
10°	0	0	0	0	0	0	0	0	0	0
12.5°	1	1	1	1	1	1	1	1	1	2
15°	2	2	2	2	2	2	2	2	2	3
17.5°	4	3	3	3	3	4	4	4	4	4
20°	5	5	5	5	5	5	6	6	6	7
22.5°	8	7	7	7	7	7	8	8	9	9
25°	10	10	10	10	10	10	10	11	11	12
27.5°	13	12	12	12	12	12	13	13	14	14
30°	15	14	14	14	14	14	15	15	16	16
32.5°	16	16	16	16	16	16	16	17	17	18
35°	18	18	18	18	17	17	18	19	19	20
37.5°	19	19	19	19	19	19	19	20	20	21
40°	21	21	21	20	20	20	20	21	21	22
42.5°	22	22	22	22	21	21	21	22	22	23
45°	24	24	24	23	23	23	23	24	24	25
47.5°	26	26	26	26	26	26	26	27	27	27
50°	29	29	28	28	28	29	29	30	30	30
52.5°	33	32	31	31	31	32	32	33	33	34
55°	36	35	35	34	34	35	36	37	37	37
57.5°	40	38	38	38	38	39	40	41	41	41
60°	46	44	43	43	43	46	47	48	48	48
62.5°	53	51	50	50	51	53	55	56	57	57
65°	62	58	57	56	58	61	63	65	66	66
67.5°	70	66	65	64	65	69	72	75	76	77
70°	72	68	68	67	68	72	74	77	79	81
72.5°	70	66	67	66	66	69	72	75	76	78
75°	63	60	61	60	60	63	65	67	69	71
77.5°	55	53	53	53	53	55	57	60	61	63
80°	46	44	45	44	44	47	48	50	52	54
82.5°	37	36	36	35	36	38	40	41	42	45
85°	28	26	27	27	27	28	30	32	32	35
87.5°	17	17	17	17	17	18	18	19	20	23
90°	9	8	8	8	8	9	9	9	10	11
95°	2	2	2	2	2	2	2	2	2	3
105°	1	1	1	1	1	1	1	1	1	1
115°	0	0	0	0	0	0	0	0	0	0
125°	0	0	0	0	0	0	0	0	0	0
135°	0	0	0	0	0	0	0	0	0	0
145°	0	0	0	0	0	0	0	0	0	0
155°	0	0	0	0	0	0	0	0	0	0
165°	0	0	0	0	0	0	0	0	0	0



REPORT NUMBER: ITL52168

CATALOG NUMBER: 1900-IL-30-CF26

CANDELA DISTRIBUTION (continued):

	95°	105°	115°	125°	135°	145°	155°	165°	175°	180°
175°	0	0	0	0	0	0	0	0	0	0
180°	0	0	0	0	0	0	0	0	0	0

(END OF REPORT)